



SALE SECOND HAND

TREHARD 70

550 000 € All Tax Included

## Description

This beautiful TREHARD 70 ketch ( plan MAURIC ) is in excellent condition. She has been fully refitted in 2017/2018 ( new paint, new teck deck, 2 new engines, new rigging, new electric and plumbing systems ....) and will seduce you with her design, her volumes and amazing areas either inside or outside. Moreover, her twin engines coupled to the bow thruster enable a very easy manoeuver when docking. TO BE VIEWED

Yachtside Group

P. CHADEL : 0033 6 48 11 52 61

## Specifications

YEAR  
**1983**

WIDTH  
**4.78**

FUEL TANK CAPACITY  
**4900**

PASSENGER CAPACITY  
**12**

BATHROOMS  
**2**

ENGINE HOURS  
**283**

LENGTH  
**21.33**

DRAFT  
**2.50**

FRESH WATER CAPACITY  
**800**

CABINS  
**3**

ENGINE MANUFACTURER  
**PERKINS M190 C**

HORSE POWER  
**2 X 190 CV**

## GENERAL

TYPE Voilier	BRAND TREHARD	MODEL 70	CLASSIFICATION A
PASSENGER CAPACITY 12	FLAG FRANCAIS	CURRENT LOCATION Sud Est De La France	

## DIMENSIONS/PERFORMANCE

DISPLACEMENT LADEN (T) 32.00	FRESH WATER CAPACITY (L) 800	GREY WATER CAPACITY (L) 750	BLACK WATER CAPACITY (L) 120
FUEL CAPACITY (L) 4900	CRUISING SPEED (ND) 8.00	TOP SPEED (ND) 14.00	CONSUMPTION (L/H) 18
AUTONOMY (NM) 2313			

## BUILDING/FACILITIES

HULL MATERIAL Aluminium	HULL COLOR Beige (De 2016)	SUPER STRUCTURE MATERIAL Aluminium	DECK MATERIAL Teck
AMOUNT OF CABINS 3	BERTHS 6	NUMBER OF BATHROOMS 2	DESCRIPTION Interior Was Redone In 2017 Electric SANI MARIN Toilet

## ENGINE ROOM

ENGINE  
PERKINS M190 C

HORSE POWER  
2x190CV

ENGINE YEAR  
2016

ENGINE HOURS  
283

ENGINE SERIAL NUMBER  
PJ51488U046166Y /  
U035118V

PROPELLER TYPE  
Ligne D'arbre

PROPELLERS  
3 Pales J-Prop (2017)

FUEL  
Diesel

BOW THRUSTER

DESCRIPTION  
Details

## ELECTRICITY/AIR CONDITIONING

VOLTAGE  
12/24/220

ENGINE BATTERY  
2

BATTERY CHARGER  
VICTRON QUATRO 5000  
W / 120 Ah + MASTERVOLT  
24 V / 30 Ah

BATTERY SERVICE  
8 X 12 V 800 Ah En 24

GENERATOR  
FISHER PANDA 10 KW  
(2016)

INVERTER  
VICTRON QUATRO 5000  
W / 120 Ah

AIR CONDITIONING  
CONDARIA

WATER MAKER  
80 L/h

COMPRESSOR  
NARDI

DESCRIPTION  
Electric Circuit (2017)

## NAVIGATION EQUIPMENT

---

GPS  
RAYMARINE Hybridtouch  
12' X2 + 1 À L'intérieur  
De10' (2018)

TRACER

RADAR  
RAYMARINE 4KW HD 48  
Nm

AUTOPILOT  
RAYMARINE EV 100

TRIDATA  
RAYMARINE X2

VHF  
ICOM M602

NAVIGATION COMPASS

INDICATOR

AIS  
Classe B RAYMARINE AIS  
650 (Émetteur / Récepteur)

WIND INSTRUMENTS

ANCHOR  
CQR 35 Kg Chaîne 120 M  
Diam.14

DESCRIPTION NAVIGATION EQUIPMENT  
Details

## GALLEY/LAUNDRY/ENTERTAINMENT

---

MICROWAVE  
WHIRLPOOL

FREEZER  
Tiroirs 2x 150 L

FRIDGE  
300 L

STOVE  
TECHIMPEX (3 Feux Gaz)

DISHWASHER  
SIEMENS ( 6 Couverts)

WASHING MACHINE  
Séchant ELECTROLUX

DESCRIPTION OF KITCHEN EQUIPMENT  
Details

TV  
Salon + Cabine Invités

DESCRIPTION ENTERTAINMENT EQUIPMENT  
Overhead Projector (Master's Cabin) BOSS Audio System With Bluetooth WIFI Router 5 G Satellite TV INTELLIAN

## DECK EQUIPMENT

---

WINDLASS  
LEROY SOMER (Révisé)

GANGWAY  
BESENZONI (2016)

SWIM LADDER

TEAK DECK COCKPIT  
2018

DECK SHOWER

SUNBATHING CUSHIONS  
Avant

UNDERWATER LIGHTS

DESCRIPTION DECK EQUIPMENT  
Complete Cockpit Closure Canopy

## SAFETY EQUIPMENT / MISCELLANEOUS

---

FIRE ALARM

LIFE RAFT

Révisé

DESCRIPTION EQUIPMENT FITTINGS

Mainsheet Track + Genoa Sheet Track Forestay X2 (1 Releasable) Mainmast Winches 2x 55 + 1x 48 LEWMAR - Mizzen 2x 40 + 1x 43 + 2x 48 LEWMAR Electric Winches 2x 65 LEWMAR Spinnaker Pole Spinnaker Sock Bowsprit Delphinière Steering Wheel Electric Furling System + Hydraulic Mizzen Electric Genoa Furler PROFULE (2017) Downhaul

## SAILS

---

GENOA SAIL

DACRON (2022)

SPINNAKER

MAIN SAIL

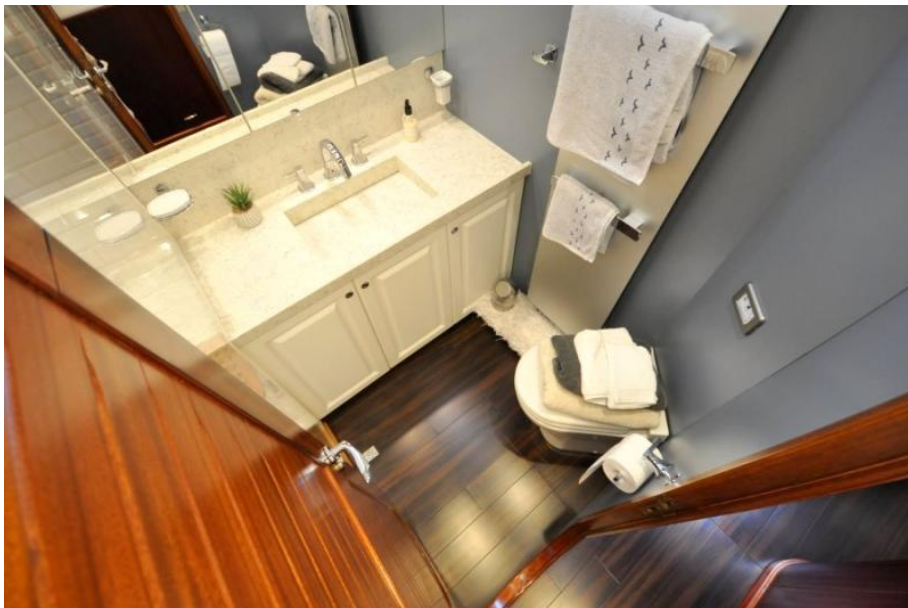
DACRON (2017)

SAILS EQUIPMENTS DESCRIPTION

Staysail Genaker







# YACHTSIDE

MONACO









